

# Algues



Acetabulaire  
*Acetabularia acetabulum*  
Acetabularia

2 - 6 cm ▽ 0 - 30 m



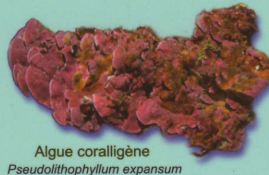
Algue feuillée dichotome  
*Codium vermilara*  
Forked felt alga

3 - 30 cm ▽ 2 - 50 m



Ulve  
*Ulva rigida*  
Sea lettuce

12 - 40 cm ▽ 0 - 5 m



Algue coralligène  
*Pseudolithophyllum expansum*  
Stone-leaf

3 - 200 cm ▽ 20 - 60 m



Algue crochet  
*Paspargopsis armata*  
harpoon alga

10 - 15 cm ▽ 0 - 5 m



Dictyote  
*Dictyota dichotoma*  
Forkweed

10 - 15 cm ▽ 0 - 50 m



Rissoelle verruqueuse  
*Rissoella verruculosa*  
Rissoella

10 - 70 cm ▽ 0 - 2 m



*Caulerpa racemosa*  
*Caulerpa racemosa*  
Caulerpa

3 - 30 cm ▽ 1 - 40 m



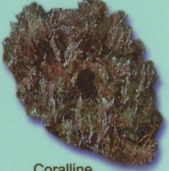
Halimède  
*Halimeda tuna*  
Calcareous green grass

3 - 20 cm ▽ 3 - 50 m



Mésophylle  
*Mesophyllum lichenoides*  
Ross coral

5 - 8 cm ▽ 0 - 25 m



Coralline  
*Corallina elongata*  
Coral weed

5 - 6 cm ▽ 0 - 5 m

# Plantes marines



Codium en boule  
*Codium bursa*  
Ball-algae

5 - 35 cm ▽ 1 - 50 m



Posidonie  
*Posidonia oceanica*  
Neptune grass

20 - 100 cm ▽ 0 - 30 m



Cymodocée  
*Cymodocea nodosa*  
Slender sea-grass

10 - 30 cm ▽ 0 - 10 m



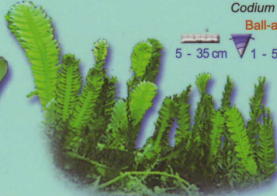
Padine  
*Padina pavonica*  
Peacock alga

5 - 10 cm ▽ 0 - 20 m



*Caulerpa prolifera*  
*Caulerpa prolifera*  
Caulerpa

5 - 25 cm ▽ 1 - 30 m



*Caulerpa taxifolia*  
*Caulerpa taxifolia*  
Caulerpa

3 - 20 cm ▽ 3 - 50 m

# Bryozoaires



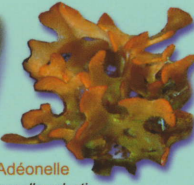
Bryzoaire des posidonies  
*Electra posidoniae*  
Neptune grass bryozoan

1 - 6 cm ▽ 0 - 30 m



Adéonelle  
*Adeonella calveti*  
Adeonella

5 - 15 cm ▽ 5 - 30 m



Claveline  
*Clavelina lepadiformis*  
Transparent seasquirt

15 - 20 cm ▽ 5 - 200 m

# Tuniciers



Ascidie blanche  
*Phallusia mammillata*  
White seasquirt

15 - 20 cm ▽ 5 - 200 m

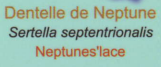


Clavelines jaunes  
*Pycnoclavella aurilucens*  
Small neon seasquirt



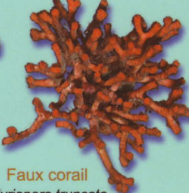
Claveline transparente  
*Clavelina dellavallei*  
Bluestriped seasquirt

1 - 2 cm ▽ 5 - 20 m



Dentelle de Neptune  
*Sertella septentrionalis*  
Neptunes'lace

1 - 10 cm ▽ 0 - 50 m



Faux corail  
*Myriapora truncata*  
False coral

5 - 15 cm ▽ 10 - 30 m

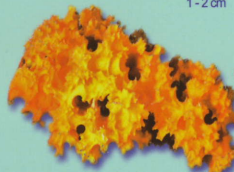


Ascidie rouge  
*halocynthia papillosa*  
White spotted octopus

5 - 10 cm ▽ 5 - 80 m

Claveline  
*Clavelina lepadiformis*  
Transparent seasquirt

15 - 20 cm ▽ 5 - 200 m



Eponge épineuse orange  
*Acanthella acuta*  
orange spiny sponge

5 - 10 cm ▽ 5 - 40 m

# Spongiaires



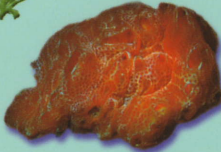
Axinelle commune  
*Axinella polypoides*  
Common antlers sponge

60 - 100 cm ▽ 10 - 100 m



Eponge fibreuse  
*Ircinia fasciculata*  
Fibrous sponge

10 - 30 cm ▽ 5 - 30 m



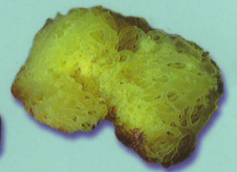
Eponge encroûtante orange  
*Crambe crambe*  
Orange encrusting sponge

10 - 50 cm ▽ 5 - 50 m



Eponge noire  
*Ircinia spinosula*  
Black sponge

50 - 100 cm ▽ 5 - 50 m



Clathrine  
*Clathrina clathrus*  
Yellow clathrine

5 - 10 cm ▽ 5 - 30 m